

Lead

a fool

musical "creash"

miki chambiki

chilled ♩ = 112

(A)



Have you tried to tell a ___ fool ___ that ___ he's ___ a fool?



Did ___ you say he's nei - ther ___ smart ___ nor ___ a ___ bit cool?



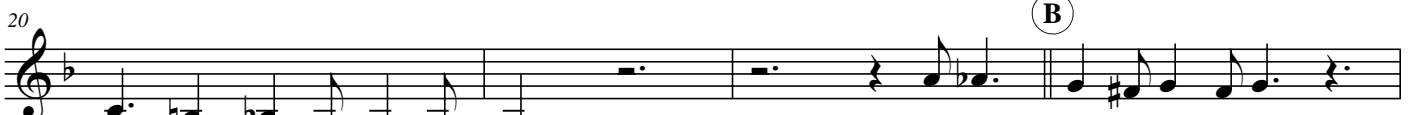
He ___ talks a - bout things o - ther peo - ple ___ do ___ knows



e - very-thing bet - ter al - ways shares his ___ view ___ so you'll ne - ver con - vince a ___ fool



___ that he's a ___ fool ___ so you'll ne - ver con - vince a ___ fool



___ that he's a ___ fool. ___ It goes la - ba - da - ba - da

(B)



all the time the same la - ba - da - ba - da ___ to me ___ it sounds like ga - ga - ga - ga



so please be nice and stop this end - less sence - less la - ba - da. ___



You'll ne - ver tell a ___ fool ___ that ___ he's ___ a fool

(C)



you'll ne - ver tell a ___ fool ___ that ___ he's ___ a fool.